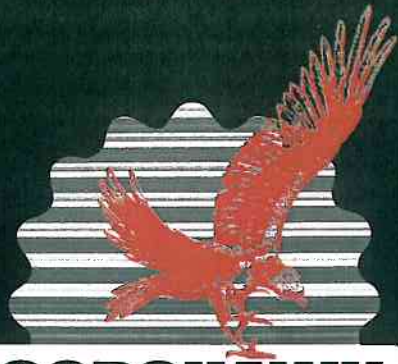


# MORE THAN JUST A SHELTER



**COROHAWK**  
THE ROUND DOG KENNEL



Calf



Goat



Pig



Chicken



More like a stress free motel unit for the protection of your stock against the elements and that means:

- ➔ Contented animals
- ➔ Healthier animals
- ➔ Wise management
- ➔ Better production

It makes investment sense



450 O'Regan Road, R.D. 2, Ohaupo

Mobile: 027 495 5845, Freephone 0800 763 555, Telephone: (07) 825 2050, Facsimile: (07) 825 2060

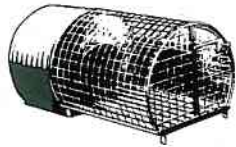
www.corohawk.co.nz





The whole range of shelters COROHAWK manufacture, are based around the famous DOG, unique to New Zealand. Construction is of .55mm corrugated tank steel curved to a half circle. This helps lock the ends and floor in place for strength and durability as well as enhancing appearance. All timber is tanalised including the ply and components are glued, nailed and stapled together. All products can be altered to meet your individual needs and/or requirements.

## DOG KENNELS

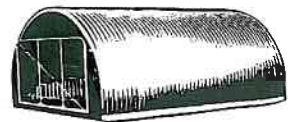


The range includes 5 sizes which are fully lined with ply. The corrugation with the ply forms an air gap which acts as insulation. It is cool in the summer and warm in the winter.

Eyelids and anti-chew bars around the entrance are standard features. All runs are interchangeable with each kennel size.

All units are welded mesh which are dip galvanised and have slat flooring.

## CALF SHELTERS



The basic unit starts at 1.9m long x 2.4m wide. Additional sections of .75m can make these shelters to any length that you require. The smallest unit holds approx. 12 calves with each additional section holding another 4 calves.

The runners are treated timber, sloped and towing eyes attached for towing behind the bike when it comes time to shift it to a new site. The base boards on the ends are raised to clear the ground and/or new sawdust pad. A flap on the back eliminates the wind or draught.

The front comes with a gate attached to enable you to lock up your stock. The shelter can also double as an extra shed for a sick cow, other animals, feed storage or storage for the bike.

The design has strong wind resistance due to its shape.

The popular unit is the double which holds approx. 24 calves and is 3.8m long.

## CHICKEN COOPS



These consist of the half round shelter with an A-frame run attached to the front. The shelter has two perches on the inside with a nesting box attached to the back for collecting eggs and cleaning. The feeding area is enclosed with netting on the A-frame. A door in the front lets the birds out and/or allows for changing the food and water. There is a handle on the front to lift the coop onto its two wheels at the back for shifting to new grass.

COROHAWK has two coops available, one is designed to cater for a dozen birds and the other for eight birds.

## FREE RANGE CHICKEN SHED

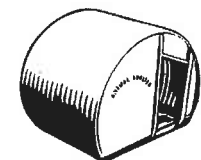


With the emphasis on Free Range, we at COROHAWK designed a shed that would cater for the needs of rearing birds out in the field.

The shed is 2.4 x 2.4 x 2.4m. It has 36 nesting boxes down one side and six rows of perches on the other side. It is capable of housing up to 120 birds. Locking door, towing eyes and rain gutter are standard features.

You can purchase a complete chicken shed, or an empty shed with or without floor. These can be built to any length. Light panels can be added to sides and ends.

## PIG SHELTERS FARROWING HUTS



The Pig Huts usually service one sow and her litter, while they can house up to 3 weaners or porkers during fattening.

The floor is strengthened with 3 x 75mm x 50mm bearers. A metal cap is put on the front of the entrance to stop weaning. The door is also edged with 75mm x 50mm timbers to stop the pigs from breaking the front.

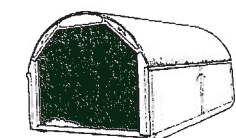
The farrowing huts have an anti-crush rail around the inside which is 200mm off the floor. There are 2 sizes - both 1.2m deep but one 1.5m wide, the other 2.2m wide. To move the huts, all that is required is to roll them to the new site. The Calf Shelter is the next step up in size.

## GOAT SHELTERS



These shelters are the same size as the calf shelters but the opening is down the side instead of at the ends. This is so the bossiest goats cannot dominate the door way. The shelters come with or without a floor. Towing eyes are on one end for shifting and there is a gutter along the top edge to keep the doorway as dry as possible.

## HAY SHED STABLES



The stable measures 4.8m long, 3.0m wide, 2.4m high.

This is built on runners for moving around. It has guttering down the sides for water diversion. The size and shape of doorway is of your choice but is priced accordingly. A floor can be fitted with ease.

The stables are used for horses, garages, workshops and hay sheds.

The stables are built at the factory and transported to your site.